

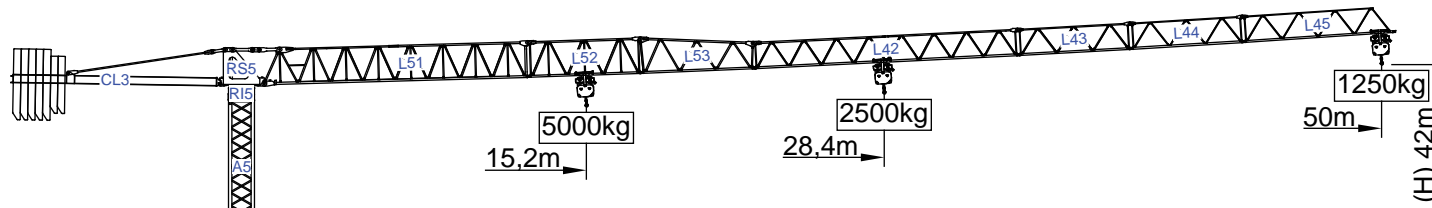
45m - 1.500kg

40m - 1.800kg

33m - 2.250kg

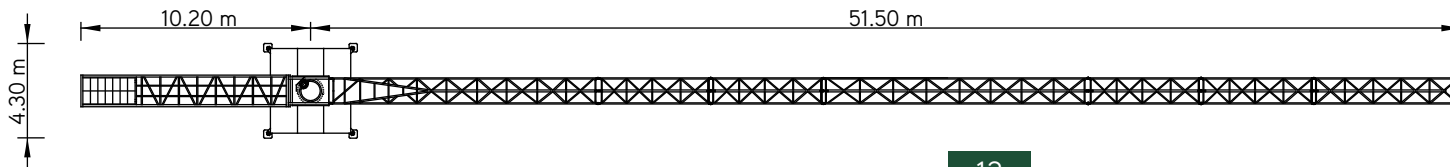
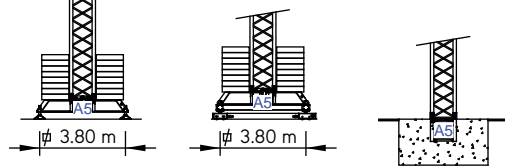
28m - 2.500kg

23m - 2.500kg



Cargas.Loads.Lasten.Charges.Cargas.Carichi.Yükler. ГРУЗОПОДЪЁМНОСТЬ

Icon	Jib Length (m)	Jib Configuration	Capacity		Height (m)	Capacity (kg)							
			5000 M/KG	2500		12	15	23	28	33	40	45	50
13000 kg 5x2000 + 2x1500 kg	50m	L51+L52+L53+L42+L43 L44+L45	5000	28,4 m	25	2500	2500	2500	2500	2100	1600	1400	1250
			2500	15,2 m		5000	5000	3200	2500	2100	1600	1400	1250
11500 kg 5x2000 + 1x1500 kg	45m	L51+L52+L53+L42+L43 L45	5000	29,5 m	25	2500	2500	2500	2500	2200	1700	1500	
			2500	15,8 m		5000	5000	3300	2600	2200	1700	1500	
11000 kg 4x2000 + 2x1500 kg	40m	L51+L52+L53+L42+L45	5000	30,3 m	25	2500	2500	2500	2500	2200	1800		
			2500	16,2 m		5000	5000	3400	2700	2200	1800		
9000 kg 3x2000+ 2x1500 kg	33m	L51+L52+L53+L43+L45	5000	30,1 m	25	2500	2500	2500	2500	2250			
			2500	16,2 m		5000	5000	3400	2700	2250			
7000 kg 2x2000+ 2x1500 kg	28m	L51+L52+L53+L45	5000	28 m	25	2500	2500	2500	2500				
			2500	15 m		5000	5000	3100	2500				
5000 kg 1x2000+ 2x1500 kg	23m	L51+L53+L45	5000	23 m	25	2500	2500	2500					
			2500	12,3 m		5000	4000	2500					










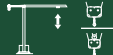

SGT 5012TL

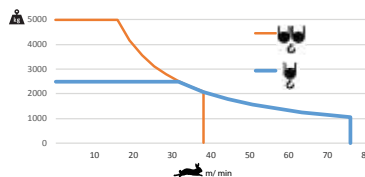
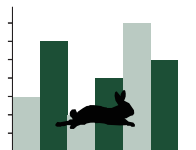
50m - 1.250kg

5.000Kg

Características . Characteristics . Eigenschaften
Caractéristiques . Caratteristiche . Caratteristiche
Özellikler . ХАРАКТЕРИСТИКИ

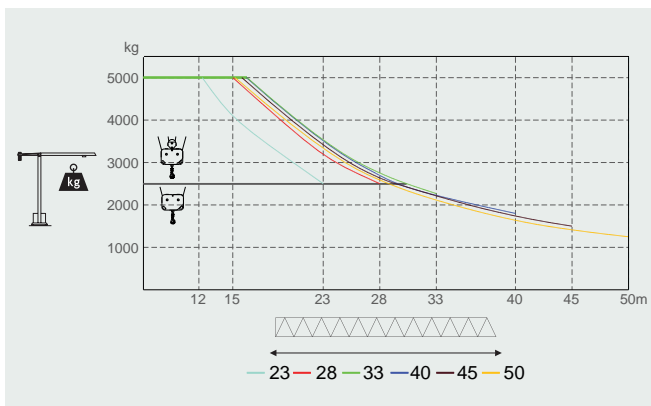
	
	0 a 1 r.p.m. 2x4 daN.m
	0 a 60 m/min 3 kW
	15 m/min 2x3 kW

	
	0 a 76 m/min 15 kW
	0 a 38 m/min



	30 kVA
	400 V +- 5% (50/60 Hz)

Velocidade de elevação . Hoisting speed . Hubgeschwindigkeit . Vitesse d'élevation .
Velocidad de elevación . Velocità di sollevamento . Kaldırma hızı (m/min) .
Скорость подъема (м/мин)



Elementos . Parts . Teile . Éléments . Elementos . Elemento . Parçalar . ЭЛЕМЕНТЫ

	A (mm)	B (mm)	C (mm)	kg	Code
L51	11950	1300	2250	2900	
L52	5200	1160	1650	535	
L53	5200	1160	1650	510	
L42	11820	1160	1210	820	
L43	5100	1160	1210	260	530 50 12
L44	5100	1160	1210	230	
L45	6800	1160	1210	290	
RS5 RI5	2150	1320	2320	2800	
CL3	9350	1380	560	2000	
CP1	1160	320	2530	2x1500 3000	704 15 00
CP2	1160	330	3140	5x2000 10000	704 20 00

TOTAL 23345

A5	11985	1160	1160	3080	530 12 00
A5	6075	1160	1160	1660	530 06 00
A5	3120	1160	1160	990	530 06 01
A5	3120	1385	1385	1040	530 06 03
A5	1275	1160	1160	450	530 06 02
A5	5530	500	750	1250	630 00 01
A5	2270	360	750	2x635 1270	

TOTAL 2520