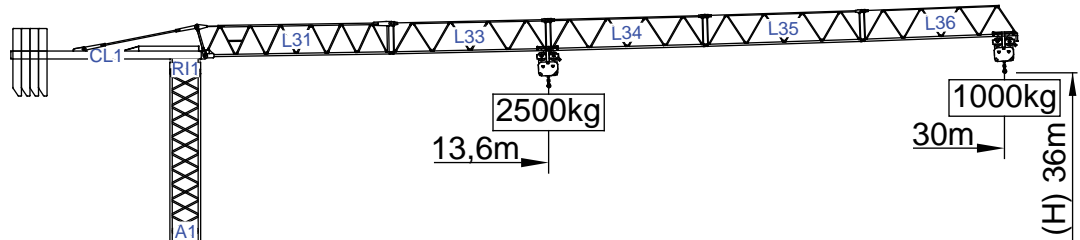


33m - 800kg

24m - 1.300kg

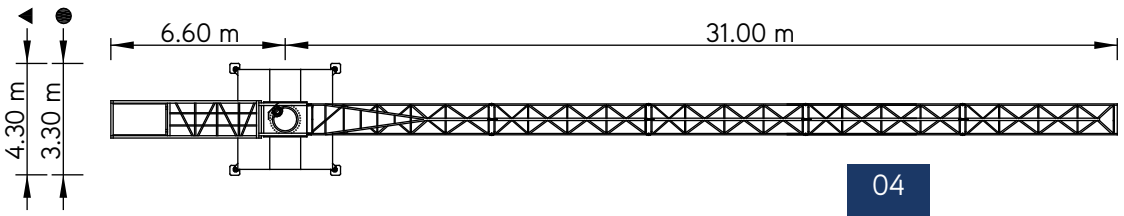
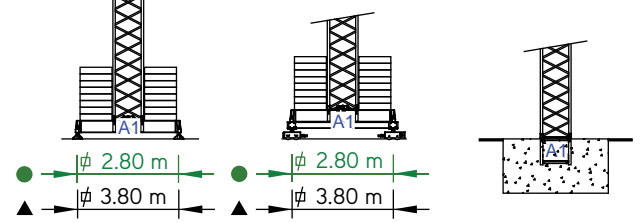
18m - 1.600kg

12m - 2.500kg



Cargas.Loads.Lasten.Charges.Cargas.Carichi.Yükler.ГРУЗОПОДЪЕМНОСТЬ






Icon	Jib Section	Kg/m M. КГ 2500	m	Capacity				
				12	18	24	30	33
	33m L31+L32+L33 L34+L35+L36	12,6 m		2500	1670	1190	900	800
	30m L31+L33+L34+L35+L36	13,6 m		2500	1830	1310	1000	
	24m L31+L33+L34+L36	13,5 m		2500	1810	1300		
	18m L31+L33+L36	12,1 m		2500	1600			
	12m L31+L36	12,0 m		2500				

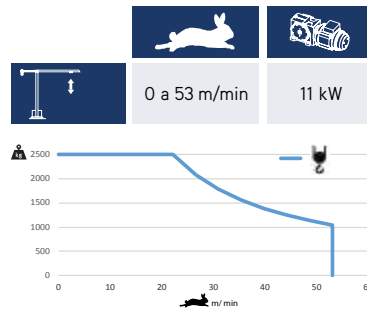
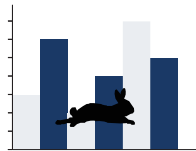


SGT 3010TL

30m - 1.000kg 2.500kg

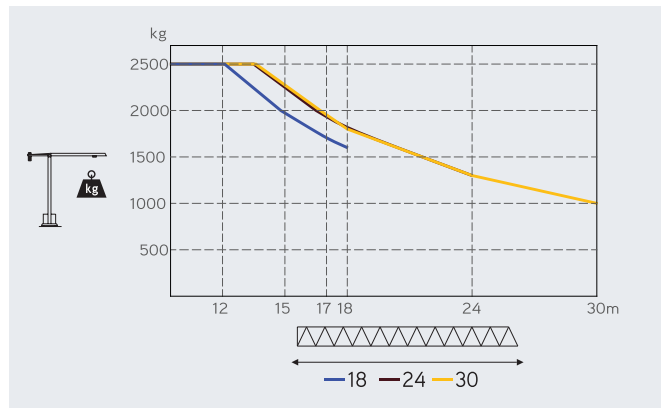
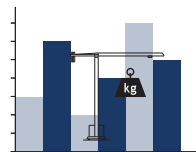
Características . Characteristics . Eigenschaften
 Caracstéristiques . Caratteristiche . Caratteristiche
 Özellikler . ХАРАКТЕРИСТИКИ

	
 0 a 1 r.p.m.	3 daN.m
 0 a 50 m/min	1,5 kW
 15 m/min	2x2 kW

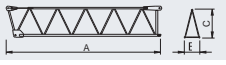




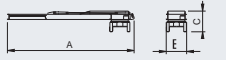
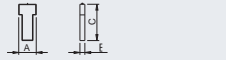
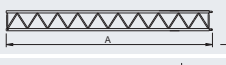



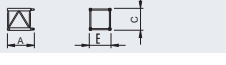

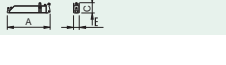
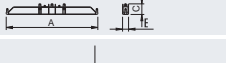



 20 kVA
 400 V +- 5% (50/60 Hz)

Velocidade de elevação . Hoisting speed . Hubgeschwindigkeit . Vitesse d'élevation .
 Velocidad de elevación . Velocità di sollevamento . Kaldırma hızı (m/min) .
 Скорость подъема (м/мин)



Elementos . Parts . Teile . Éléments . Elementos . Parçalar . ЭЛЕМЕНТЫ

		A (mm)	B (mm)	C (mm)	kg	Code	
L31		7470	800	1650	1560	503 30 10	
L33		6055	760	1210	350		
L34		6040	760	1200	275		
L35		6030	760	1190	250		
L36		5900	760	1400	240		
CL1 R11		7380	1200	1530	2450		
CP1		1160	320	2530	4x1500 6000	704 15 00	
TOTAL					10935		
A1		11985	1180	1180	1700	503 12 00	
A1		6050	1180	1180	890	503 06 00	
A1		3120	1180	1180	500	503 06 01	
A1		3120	1385	1385	560	503 06 03	
A1		1170	1160	1160	210	503 06 02	
A1		2,8	4410	400	620	410	603 00 11
A1			2015	230	620	2x250 500	
TOTAL					910		
A1		3,8	5500	400	620	520	603 00 11
A1			2710	230	620	2x300 600	
TOTAL					1120		