

30m - 1.300kg

24m - 1.600kg

18m - 2.000kg

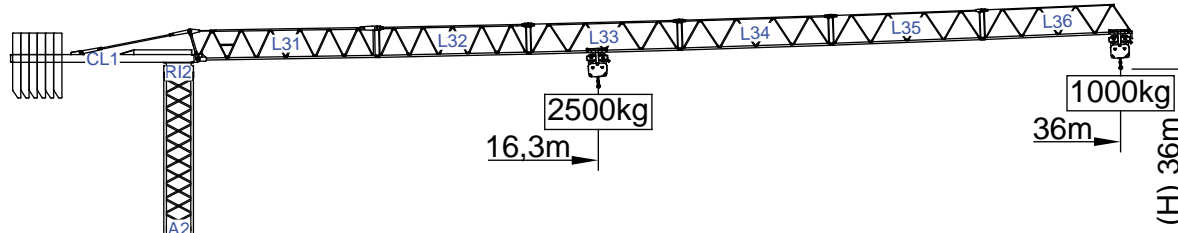
12m - 2.500kg

I

II

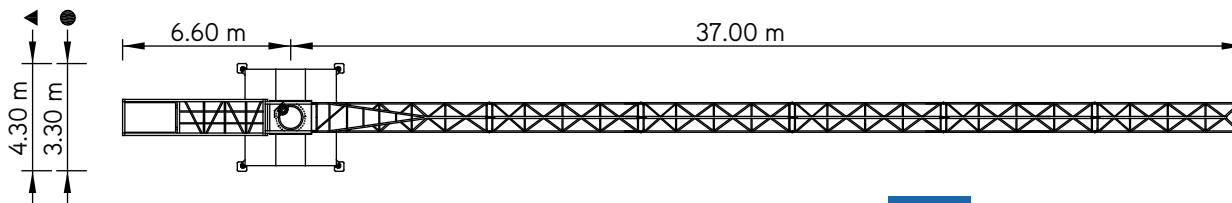
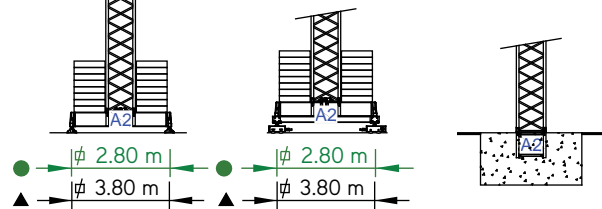
III

IV



Cargas.Loads.Lasten.Charges.Cargas.Carichi.Yükler. ГРУЗОПОДЪЕМНОСТЬ

			Kg/m M/КТ 2500	m Kg	12	18	24	30	36
	36m	L31+L32+L33+L34 L35+L36							
9000 kg 6x1500 kg	36m	L31+L32+L33+L34 L35+L36	16,3 m		2500	2250	1620	1250	1000
7500 kg 5x1500 kg	30m	L31+L32+L33+L34+L36	16,9 m		2500	2330	1680	1300	
6000 kg 4x1500 kg	24m	L31+L32+L33+L36	16,1 m		2500	2210	1600		
4500 kg 3x1500 kg	18m	L31+L32+L36	14,7 m		2500	2000			
3000 kg 2x1500 kg	12m	L31+L36	12,0 m		2500				








# SGT 3610TL

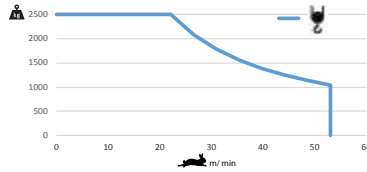
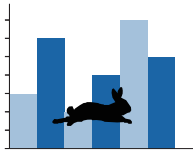
30m - 1.000kg


2.500kg

Características . Characteristics . Eigenschaften  
 Caratteristiche . Characteristics . Caratteristiche  
 Özellikler . ХАРАКТЕРИСТИКИ

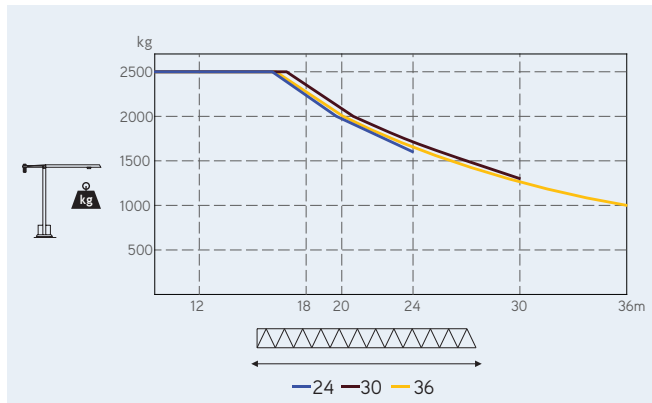
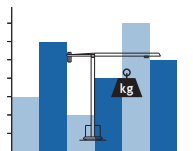
	
	0 a 1 r.p.m. 3 daN.m
	0 a 50 m/min 1,5 kW
	15 m/min 2x2 kW

	
	0 a 53 m/min 11 kW


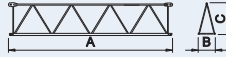
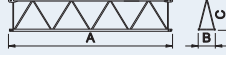
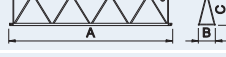
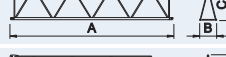
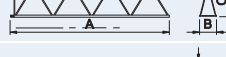
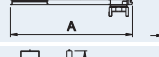
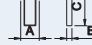


	20 kVA 400 V +- 5% (50/60 Hz)
---	----------------------------------

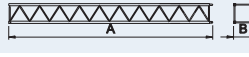
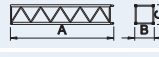
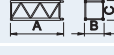
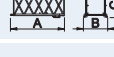
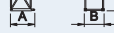
Velocidade de elevação . Hoisting speed . Hubgeschwindigkeit . Vitesse d'élevation .  
 Velocidad de elevación . Velocità di sollevamento . Kaldırma hızı (m/min) .  
 Скорость подъема (м/мин)

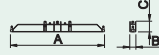
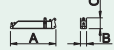


Elementos . Parts . Teile . Éléments . Elementos . Elemento . Parçalar . ЭЛЕМЕНТЫ



		A (mm)	B (mm)	C (mm)	kg	Code
L31		7470	800	1650	1560	506 36 11
L32		6075	760	1220	385	
L33		6055	760	1210	350	
L34		6040	760	1200	275	
L35		6030	760	1190	250	
L36		5900	760	1400	240	
CL 1 RI 2		7380	1200	1530	2450	
CP1		1160	320	2530	6x1500 9000	704 15 00

TOTAL 14510

A2		11985	1180	1180	1950	506 12 00
A2		6075	1180	1180	1030	506 06 00
A2		3120	1180	1180	560	506 06 01
A2		3120	1385	1380	620	506 06 03
A2		1170	1160	1160	250	506 06 02

A2		2,8	4135	430	720	600	603 01 11
			2025	250	720	2x350 700	

TOTAL 1300

A2		3,8	5525	430	720	750	606 00 01
			2720	250	720	2x400 800	

TOTAL 1550